

Building Preservation Trusts

Your Partners in Preservation





UK Association of Preservation Trusts

- Formed in 1989 at the request of its members
- Over 270+ Building Preservation Trusts (BPTs) around the UK
- 26 Member Trusts based in Wales
- Oldest Trusts (UK) date from 1930's but many formed by Local Authorities 1970s onwards



UK Association of Preservation Trusts

- Publishes Guidance Notes: a working manual of good practice for BPTs
- Offers a free VAT Advice Scheme
- Practice Advisers Scheme
- Produces a regular Newsletter



UK Association of Preservation Trusts

- Organises regular Seminars and Conferences
- Is a channel of communication between BPTs, Government and statutory bodies
- Offers its members practical advice and support
- Members offer support and advice to each other

What is a Building Preservation Trust?

- Charity and Company Ltd by Guarantee
- Principal purpose is to preserve historic buildings/structures for the benefit of the community
- Popularly known as 'Restorers of last Resort'
- Voluntary and Community based organisations

Revolving or Single Trust BPTs

- **Revolving fund BPTs:**

Acquire, restore, adapt and dispose of historic buildings. Rolling programme of projects. Money released from one project can be applied to another

- **Single Project BPTs:**

Rescue, preserve and manage a specific building. Often for community use



Building Preservation Trusts

OBJECTIVES:

- To rescue historic buildings (structures) 'at risk' that are beyond the reach of normal market forces
- To develop viable, imaginative, sustainable and beneficial new end uses



Building Preservation Trusts

COMMUNITY BENEFITS:

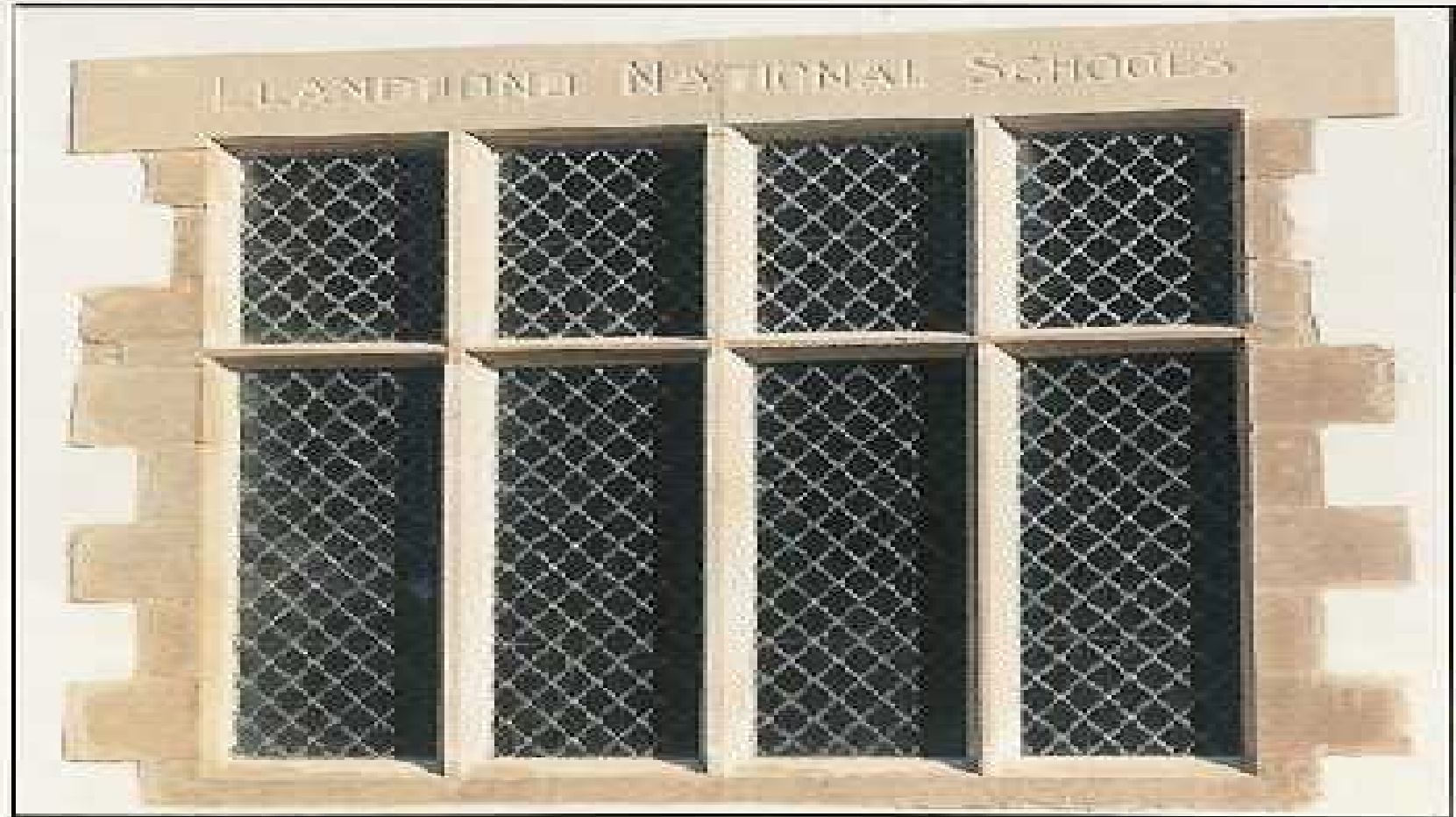
- Economic regeneration
- Confidence in previously 'blighted' areas
- Job creation
- Preservation and enhancement of craft skills
- Providing public access to heritage
- Tourism benefits



Building Preservation Only?

- Development Trusts
- Historical Societies
- Community Heritage Centres
- Heritage and Regeneration Trusts
- Conservation Trusts

St George's National School Llandudno













St George's National School Llandudno – Funding

- Heritage Lottery Fund
- Architectural Heritage Fund
- Cadw
- Conwy County Borough Council
- Welsh Development Agency
- Mostyn Estates Ltd
- Shell Better Britain
- Manifold Charitable Trust
- Alun Evans Trust
- Friends of St Georges School Committee

St George's National School Llandudno

- 13 full time (FTE) jobs
- Almost £1.million of investment
- Construction jobs/weeks
- Use of sustainable building methods
- Extensive volunteer activity
- First Class Community Facility and Early Years Centre



Partnership?

- Working with the Community
- Working with the Local Authority
- Working with Local and National organisations
- Working with Funders
- Working with Contractors & Professionals



The Architectural Heritage Fund

- Options Appraisal Grants
- Refundable Project Development Grants
- Low interest Loans
- Project Administration Grants (BPTs only)
- Project Organiser Grants(BPTs only)



Architectural Heritage fund

- Options Appraisal Grants up to £7,500
- Project Administration Grant - 4K(BPTs only)
- Project Organiser Grant -10K (BPTs only)

Architectural Heritage Fund

- Refundable Project Development Grant - AHF £15k or HLF up to 40K- to further develop detailed consents, planning approval, timetable, legal agreements, **leases etc**, plans and funding.
- Development of detailed Funding Package could include an AHF loan of up to £400,000
- Downloadable applications available







Cromford Mills Derbyshire – The Arkwright Society



Cromford Mills Derbyshire – The Arkwright Society



Cromford Mills Derbyshire – The Arkwright Society



Cromford Mills Derbyshire – The Arkwright Society





Phased restoration from 1979 taken on by Arkwright Society

- 15 businesses
- 150 people employed
- Venture Centre for young people

Arkwright Society's direct labour force has created 120 jobs with full training in building and crafts skills

Over 75,000 visitors each year

Total investment to date over £10million



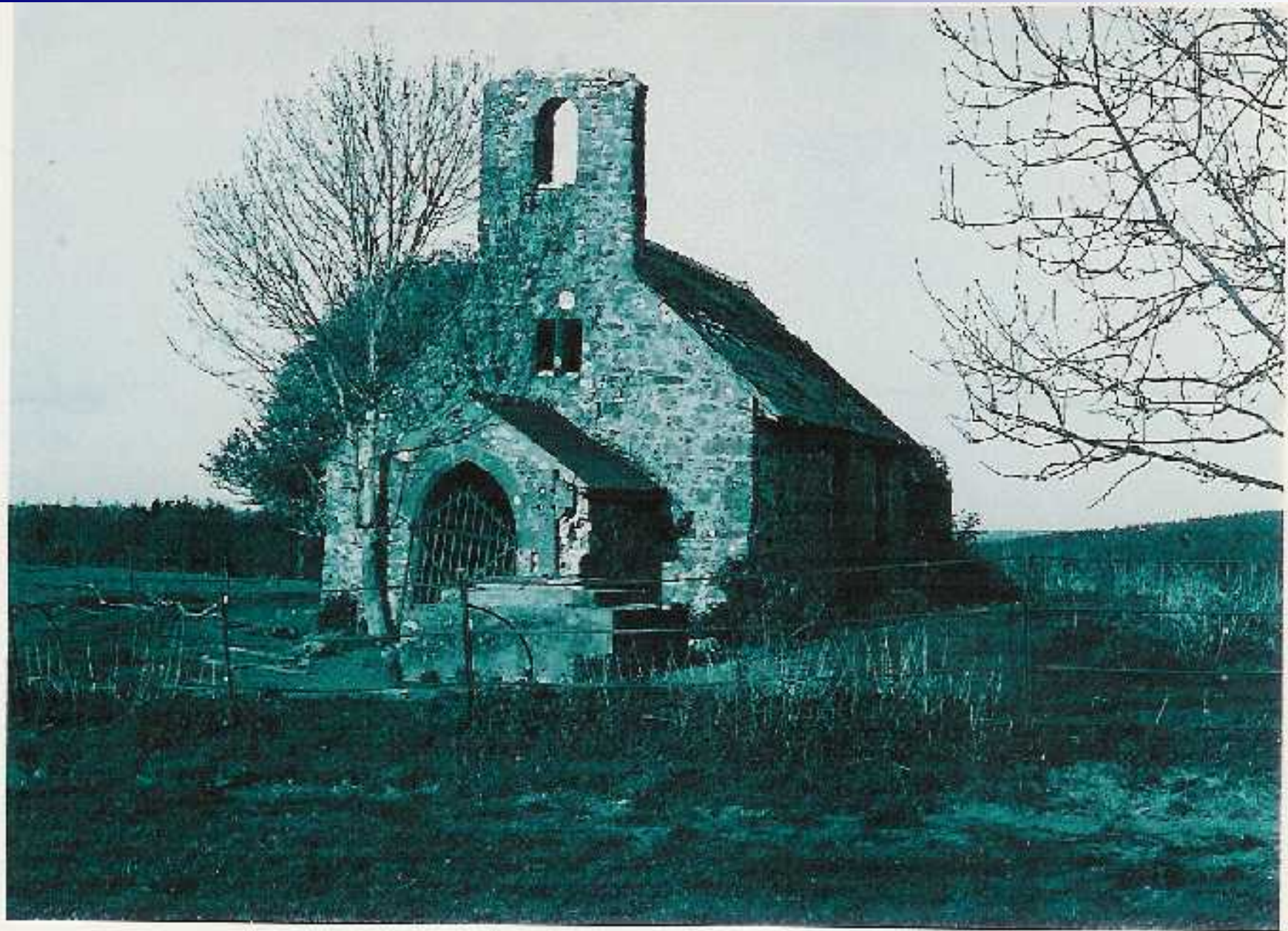












From the Welsh Assembly Government

- The culture of Wales also has a physical dimension that embraces both the natural and the historic environment...But the built heritage goes much further than the monuments and embraces both archaeology and the structures in which we continue to work and live

Creative Future:Cymru Greadigol

Cytal♦APT

- Contact:

Geraldine Delaney - Swyddog Datblygu - Cymru
Ffôn/Ffacs: 01974 821570

Geraldine Delaney - Development Officer -Wales
Phone/Fax: 01974 821570

aptwales@btinternet.com

