

The Civic Trust
for Wales

Ymddiriedolaeth
Ddinesig Cymru



WHAT MAKES A PLACE SPECIAL?

DISCOVERING THE CHARACTER OF TOWNS

 Cadw



 Powys

 Casgliad y Werin Cymru
People's Collection Wales

Programme

- Judith Alfrey (Cadw) *Studying urban character*
- Debra Lewis (Powys County Council) *Urban characterisation and the management of mid Wales towns*
- Workshop and feedback
- Rheinallt Foster-Jones (Casgliad y Werin) *Promoting understanding*

Analysing the character of towns

- Sense of place is a response to an innate feel for local character
- Can we move from recognition to analysis?
- If we understand the places we care about, we can share this understanding and work together to make them better

Proposition

- To understand and manage your town (and mine) we need to think beyond the centre, beyond the obviously special
- To engage the whole community we need to be concerned with the whole town

Propositions

- Everyday places are as interesting and as characterful as the obviously historic or special
- People can invest value and significance as much in “ordinary” places as the honey pots

Whose town is it anyway?

- Communities need to be empowered to ensure that we manage change in a way that reflect an understanding of place
- Sustainable management of the historic environment needs to reflect these values
- Character analysis can be a key to active engagement

WORKSHOP

Investigation: Newtown

- Understanding urban character
- Pen-y-gloddfa
- Sycamore Drive

Context



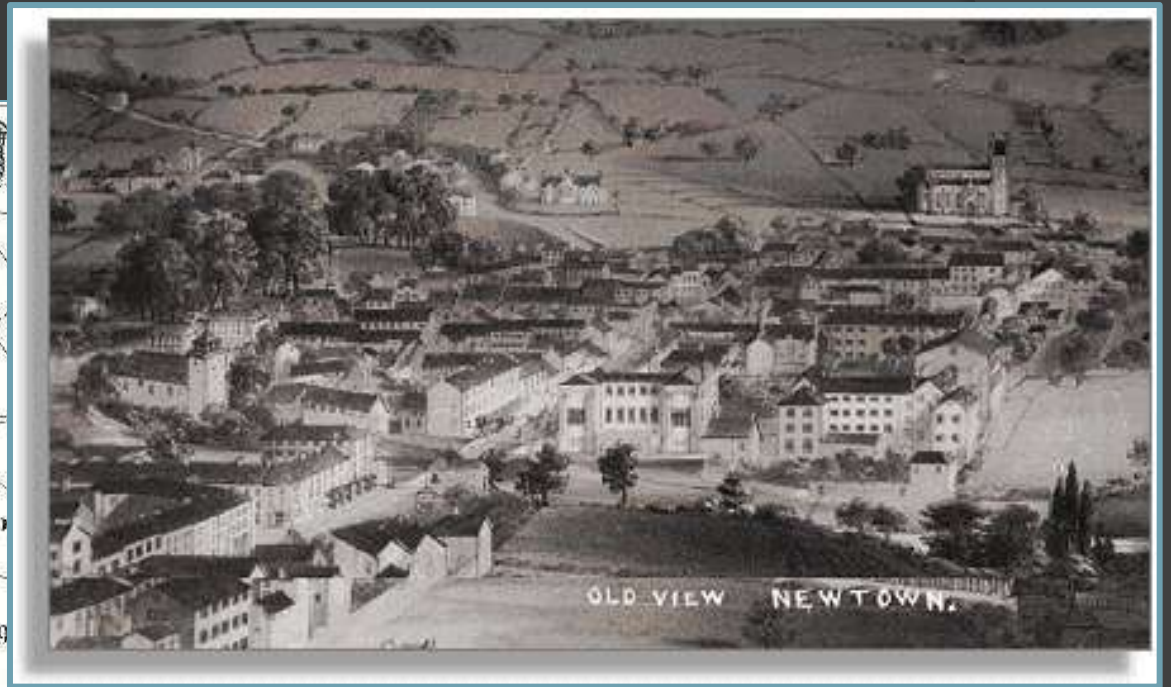
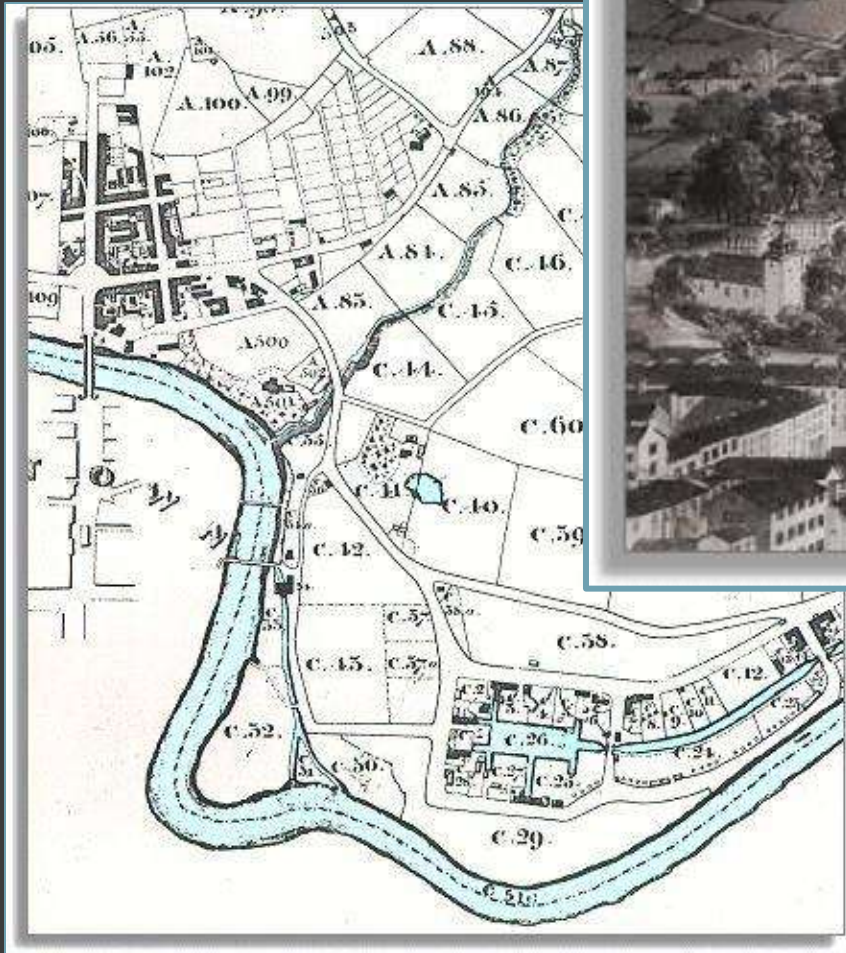
Character areas



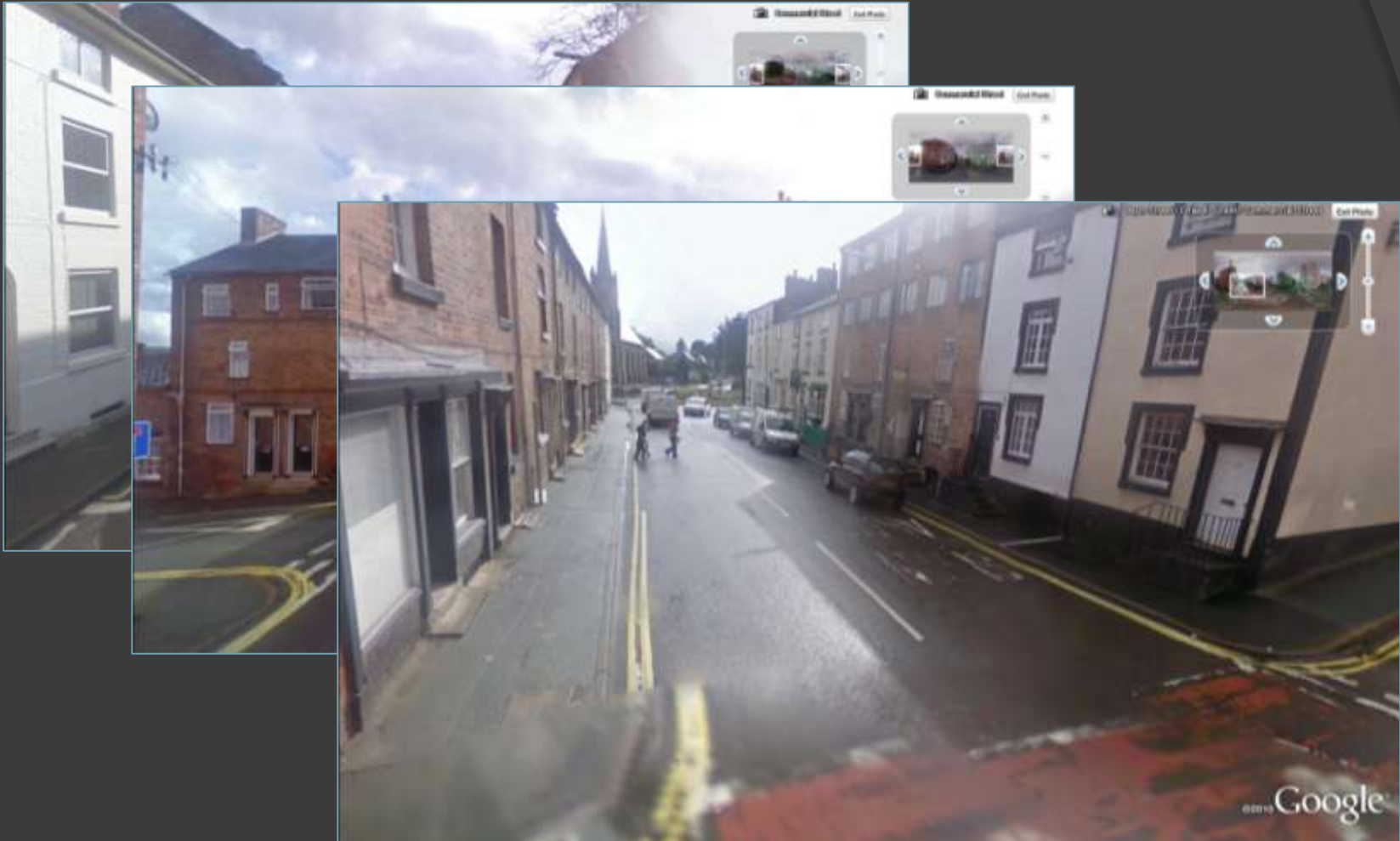
Penygloddfa



1841



Commercial Road



The Crescent



The Crescent



Bryn Street



Union Street



Sycamore Drive



Sycamore Drive



Sycamore Drive



Investigation

- Brainstorm features in the built environment that contribute to an understanding of character
- Suggest the features that are key to analysing any area of a town
- Apply these generic features to an analysis of Sycamore Drive